



Modern Light Metals, Inc.
 Coloma, MI 49038
 Ph. 800-253-1505
 Fax 269-468-4320

Aluminum Yard Ramps

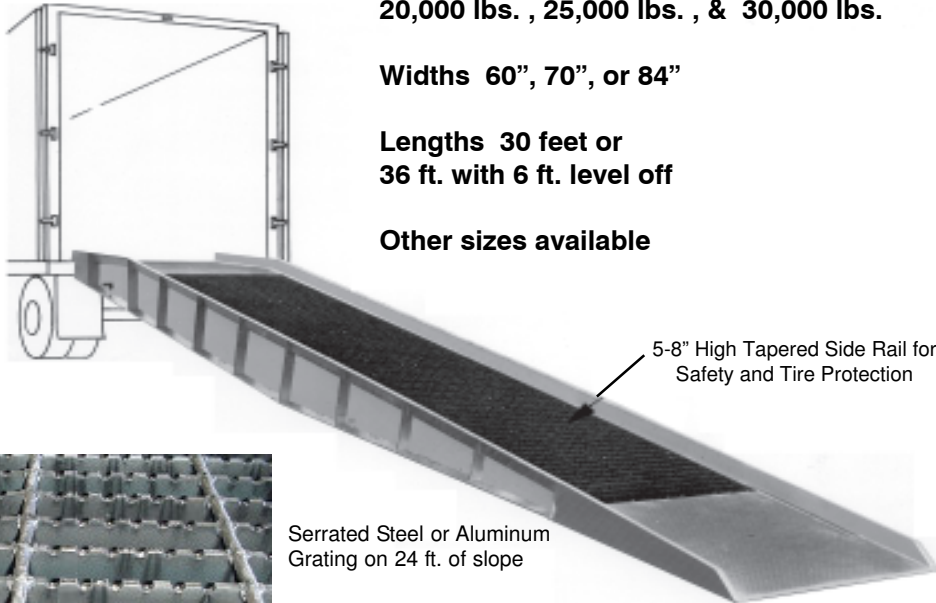
Shipment 3-4 weeks
 Frt. Classification
 Item 168710
 Class 150
 Terms: Net 30 days

**CAPACITIES 12,000 lbs., 16,000 lbs.,
 20,000 lbs. , 25,000 lbs. , & 30,000 lbs.**

Widths 60", 70", or 84"

**Lengths 30 feet or
 36 ft. with 6 ft. level off**

Other sizes available



Serrated Steel or Aluminum
Grating on 24 ft. of slope

Aluminum Yard Ramps are portable ramps which are used to get fork lift trucks from ground level up to semi-truck , boxcar, or dock height. Ramps can be used anywhere. Just one man and a lift truck gives you immediate access to rail cars or remotely parked trucks.

No jockeying cars around. Eliminate high demurrage charges because of costly delays. Eliminates costly re-handling of loads between the dock area and where product is needed within the plant.

Hydraulic operated undercarriage makes handling different height trucks a snap.

30' Ramps have range from 40"-60"
 36' Ramps 42"-67"
 36' with 6' Level off - 40"-64"

Note: 36' Ramps with Straight Incline - Use same price as 36' with 6' level off.

Other sizes available upon request.

Steel Grating

30 Foot Straight Incline			36 Foot With 6 Foot Level Off		
Model Number	Weight	Price	Model Number	Weight	Price
AYR-SG-12-60-30	2886	\$11,400	AYR-SG-12-60-36	3177	\$12,830
AYR-SG-12-70-30	3229	\$12,140	AYR-SG-12-70-36	3544	\$13,660
AYR-SG-12-84-30	3781	\$13,270	AYR-SG-12-84-36	4147	\$14,930
AYR-SG-16-60-30	2972	\$11,780	AYR-SG-16-60-36	3386	\$13,630
AYR-SG-16-70-30	3226	\$12,560	AYR-SG-16-70-36	3772	\$14,520
AYR-SG-16-84-30	3893	\$13,740	AYR-SG-16-84-36	4402	\$15,880
AYR-SG-20-70-30	3492	\$12,970	AYR-SG-20-70-36	3902	\$15,010
AYR-SG-20-84-30	4117	\$14,450	AYR-SG-20-84-36	4654	\$16,670
AYR-SG-25-70-30	3708	\$14,610	AYR-SG-25-70-36	4331	\$17,650
AYR-SG-25-84-30	4328	\$16,060	AYR-SG-25-84-36	5090	\$19,980
AYR-SG-30-84-30	4560	\$17,190	AYR-SG-30-84-36	5474	\$22,130

Example Model No.
AYR-SG-16-70-36

Aluminum
Yard Ramp

Steel Grating

Capacity in 1000's
of lbs.

Overall Width in inches
Usable is 6" less

Length of Ramp in feet

All Yard Ramps include the following as standard equipment:

- 15" Lip
- Tow Bar & Safety Chains
- Flow Control Valves
- Solid Rubber Tires (18" dia. x 5" face)

Aluminum Grating



18" Dia. by 5" face hard rubber wheels are standard

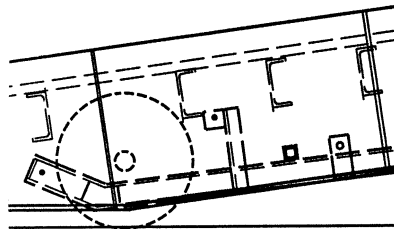


Pneumatic wheels for cinder or gravel surfaces - Please specify

30 Foot Straight Incline			36 Foot With 6 Foot Level Off		
Model Number	Weight	Price	Model Number	Weight	Price
AYR-AG-12-60-30	2316	call	AYR-AG-12-60-36	2607	call
AYR-AG-12-70-30	2549	call	AYR-AG-12-70-36	2864	call
AYR-AG-12-84-30	2925	call	AYR-AG-12-84-36	3292	call
AYR-AG-16-60-30	2402	call	AYR-AG-16-60-36	2816	call
AYR-AG-16-70-30	2646	call	AYR-AG-16-70-36	3092	call
AYR-AG-16-84-30	3038	call	AYR-AG-16-84-36	3547	call
AYR-AG-20-70-30	2749	call	AYR-AG-20-70-36	3221	call
AYR-AG-20-84-30	3261	call	AYR-AG-20-84-36	3799	call
AYR-AG-25-70-30	3028	call	AYR-AG-25-70-36	3651	call
AYR-AG-25-84-30	3473	call	AYR-AG-25-84-36	4160	call
AYR-AG-30-84-30	3705	call	AYR-AG-30-84-36	4544	call

A big part of the cost of a Yard Ramp is the shipping cost.

Please call us, we will be happy to obtain frt. rates for you and your customer.



Optional Leaf Spring Suspension System allows Towing of Yard Ramp up to 25 mph.

Options	
8" Curb instead of 5"	\$400
Pneumatic Tires	No charge
Leaf Springs for ramps under 3500 lbs	\$320
Leaf Springs for ramps over 3500 lbs.(requires duel wheels)	\$600
Hi Traction Approach	\$450
Hand Railing	\$1,940
Ramp Only -No Wheels or Hydraulics	<\$1,800>
Battery Operated Hyd. Pump - comes with two batteries and recharger	\$1,300

Specifications & Features:

All weld aluminum construction.

Epoxy-coated serrated steel grating, aluminum grating, or optional galvanized grating available.

Heavy Duty **Double acting** Hand Operated Hydraulic Pump with overload by-pass for faster operation.

Full 5" high safety curbs along entire length. **Optional 8" high curb available if wanted.**

Heavy Duty Rigid Side Frame with vertical stiffeners.

60" Treadplate at rear of Ramp - Allows more support for grating at the lower end of ramp, the punishment area. This is extremely important as forklift drivers tend to get a running start at the ramp and dish and destroy less reinforced ramps.

Grating supported with cross channels on 12 3/4" centers.

Yard Ramp Replacement Parts	
18" Solid Rubber Tire	\$308
18" Pneumatic Tire	\$245
Tow Bar	\$180
Pump Repair Kit	\$65
Hydraulic Hand Pump	\$536
With exchange - Reconditioned Pump (check availability)	\$370
7 1/2" Hydraulic Cylinder (for 36' models)	\$134
5 1/2" Hydraulic Cylinder (for 30' models)	\$134
Cylinder Packing Kit	\$ 50
Hose Kit (indicate width of ramp)	\$140
Axle for tire, with nut, & spacers (indicate tire type)	\$ 57
Pins for Hydraulic cylinders, with spacers	\$ 42
Safety Chains & Ears	\$135
Saddle Clip, Bolt, and lock Nut	\$1.50
Replacement Grating	call
Steel Under Carriage - No Tires - (indicate size)	\$850

Replacement Parts Subject to 25% Discount



Modern Light Metals, Inc.
 Coloma, MI 49038
 Ph. 800-253-1505
 Fax 269-468-4320

Aluminum Yard Ramps

Shipment 3-4 weeks
 Frt. Classification
 Item 168710
 Class 150
 Terms: Net 30 days

Type: ESF

CAPACITIES 12,000 lbs., 16,000 lbs., 20,000 lbs.

Widths 67", or 79"

Length 36 ft. total, includes 6 ft. level off

Our Economy style Yard Ramp. Side Frame of ramp is built with strong cost saving extrusions. Means a heavier ramp but a more cost effective ramp.

Aluminum Yard Ramps are portable ramps which are used to get fork lift trucks from ground level up to semi-truck , boxcar, or dock height. Ramps can be used anywhere. Just one man and a lift truck gives you immediate access to rail cars or remotely parked trucks.

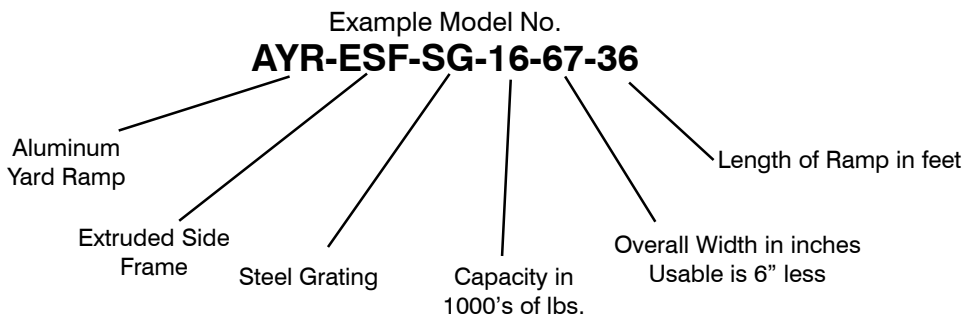


No jockeying cars around. Eliminate high demurrage charges because of costly delays. Eliminates costly re-handling of loads between the dock area and where product is needed within the plant.

Steel Grating		
36 Foot With 6 Foot Level Off		
Model Number	Weight	Price
AYR-ESF-SG-12-67-36	3880	\$13,050
AYR-ESF-SG-12-79-36	4500	\$13,950
AYR-ESF-SG-16-67-36	3960	\$13,360
AYR-ESF-SG-16-79-36	4620	\$14,030
AYR-ESF-SG-20-79-36	4700	\$14,960

Hydraulic operated undercarriage makes handling different height trucks a snap.

36' with 6' Level off have a range from - 40"-64"



All Yard Ramps include the following as standard equipment:

- 15" Lip
- Tow Bar & Safety Chains
- Flow Control Valves
- Solid Rubber Tires (18" dia. x 5" face)