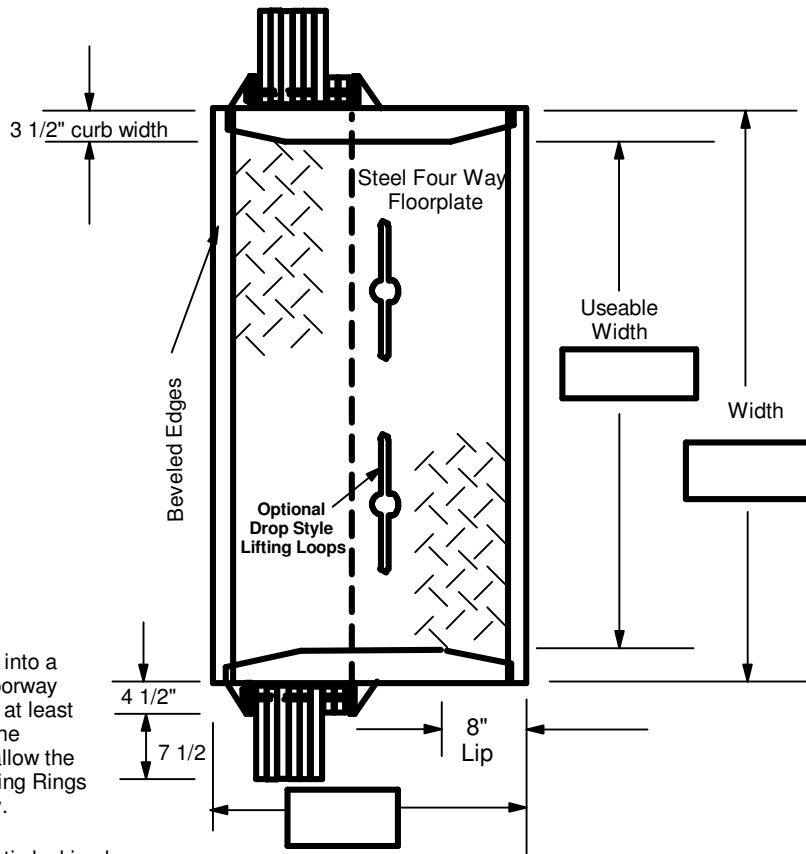


Quotation for: Steel Railroad Dockboard - Type SB



Modern Light Metals Inc.
Coloma, MI 49038
Ph. 269-468-5041



Type of Boxcars	
<input type="checkbox"/>	Regular Boxcars Vary 41-46"
<input type="checkbox"/>	Refrigerated Cars Normally 48-54"

Note:
If board is to go into a doorway, the doorway width should be at least 12" more than the board width to allow the Automatic Locking Rings to work properly.

Automatic locking by 1" Thick x 11" deep Locking Rings both sides 8 rings per side

Board shown with Minus Height Differential

Plus - Boxcar is Above Dock
Minus - Boxcar is Below Dock

Non Standard or Optional Items Wanted

- Special Lip Length
- Lifting Loops (Drop Style)
- Automatic Locking Rings

Represented By: _____

Quotation Detail: Model Number

SB

Signifies Steel Railroad Dockboard

C	W	L	H
Capacity in 1000's of lbs.	Overall Width in Inches	Length in Inches	Max. Height Differential

R = D =

Height of the dock above the top of the tracks The horizontal distance from the inside of the nearest rail to the dock. This includes the width of the rail.

Price: Good for 45 days
Terms: _____
Shipment: 14-21 days ARO
F.O.B.: Coloma, Michigan

Thank you for this opportunity to quote. We look forward to helping you in any way we can.

MIM Modern Light Metals, Inc.

Customer Acceptance or this quotation: Total _____

Shipping Weight _____
Price of Dockboard (without accessories) _____
Price of _____
Price of _____
Total Unit Price _____
Estimated Frt. Costs _____
Taxes _____

By _____ Title _____