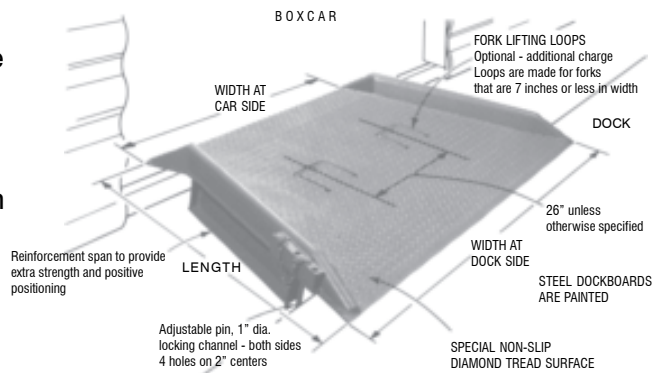


Options for Steel Railroad Dockboards

Lifting Loops

Enable forklift trucks to easily move and position large railroad dockboards. Loops swing up to make handling large boards a snap. Loops fold flush with plate when not in use, they're never in the way. On boards that have a span between 4 1/2" to 9 1/2" a drop style loop can be provided. Boards with a span less than 4 1/2" must use lifting chains. Loops are 4" high and have a 7 1/2" wide opening and are on 26" centers. (Wt. 31 lbs. extra)

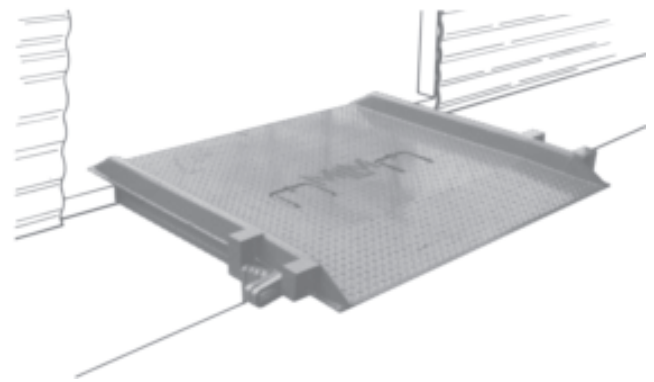
Add \$ 220.00 to list price (omitting chains)



Extra Large Lifting Loops

Only necessary for extremely high capacity boards when the lift truck forks that are handling the board are wider than 7". Loops have a 12" opening. (Weight 54 lbs. extra)

Add \$370.00 to list price (omitting chains)



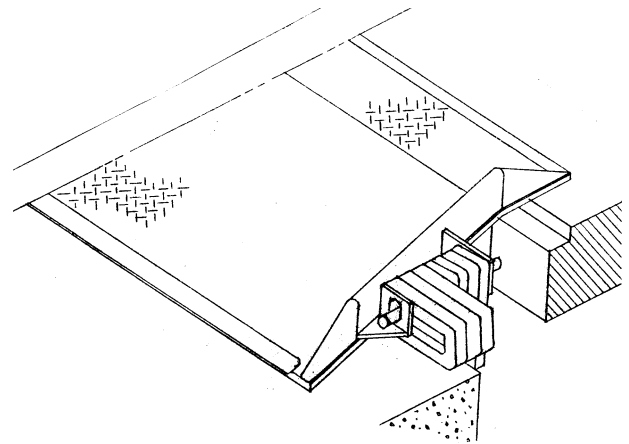
Automatic Locking Rings

Rings automatically fall into place without the need of driver intervention. Makes sure of solid locking. Rings are 1" wide x 11" deep (this means they stick down 8" below deck surface) and provide 8" adjustment. Rings add an additional 9" to the width of the board at the dock side. Weight 121 lbs.

Add \$480.00 to list price for rectangular boards

Add \$630.00 to list price for flared boards

For each additional ring (gives another 1" of adjustment on each side), add .. \$ 45.00 to list price



Optional Items for Steel Railroad Dockboards	
Lifting Chains on Steel Boards	Standard
Four Hole Side Locks	Standard
<i>Gives 8" adjustment (Pins 1" dia. 9" long)</i>	
For Each Additional 2" of adjustment Add	\$16.00
Automatic Locking Rings ... (wt. 100 lbs.)	\$480.00
Automatic Locking Rings on Flared Boards ..	\$580.00
For Each Additional Ring (1" wide) Add	\$45.00
Lifting Loops (have 7-1/2" opening)	\$220.00
Special Large Loops (have 9" opening)	\$370.00
Additional Bend	\$140.00
Painting Side Rails Yellow	\$40.00
Stenciling Capacity on Curbs	\$25.00
Welding Initials on Board (Per letter)	\$8.00
Abrasive Surface for Boards	Call